

TCE & Fetal Heart Development

Paula D. Johnson, DVM, MS

*University Animal Care, SARVER Heart Center,
and the Southwest Environmental Health Science Center*



THE UNIVERSITY OF ARIZONA
TUCSON ARIZONA

Supported by: NIEHS Superfund Grant# P42ESO4940

Why Study TCE?

- **Common Water Supply Contaminant**
 - World Wide reports of TCE contamination
 - NPL site in Tucson area
- **Epidemiology Studies**
 - Santa Barbara, CA
 - San Francisco, CA
 - Tucson AZ



Avian Studies

- Significant increase in heart defects in those treated with TCE or DCE
- Variety of heart defects



Mammalian Studies

- Sprague-Dawley Rats
 - Low spontaneous heart malformation rate
- Intrauterine exposure & Drinking water
 - Prepregnancy Only
 - Prepregnancy + Pregnancy
 - Pregnancy Only (GD 0-22)
- Significant ↑ in abnormal hearts
- Variety of heart malformations



Dose Response study

- Same methodologies as prior studies
 - Daily monitoring
 - Timed pregnancies
 - Drinking water exposure during entire pregnancy
 - Fetal heart removal & evaluation



Concentration Equivalents

Concentration ~~~~~ Avg. Dose

1,100 ppm ~~~~129.0 mg/Kg

1.5 ppm ~~~~ 0.218 mg/Kg

250 ppb ~~ 0.048 mg/Kg

2.5 ppb ~ 0.00045 mg/Kg



Trichloroethylene (TCE) Test Groups

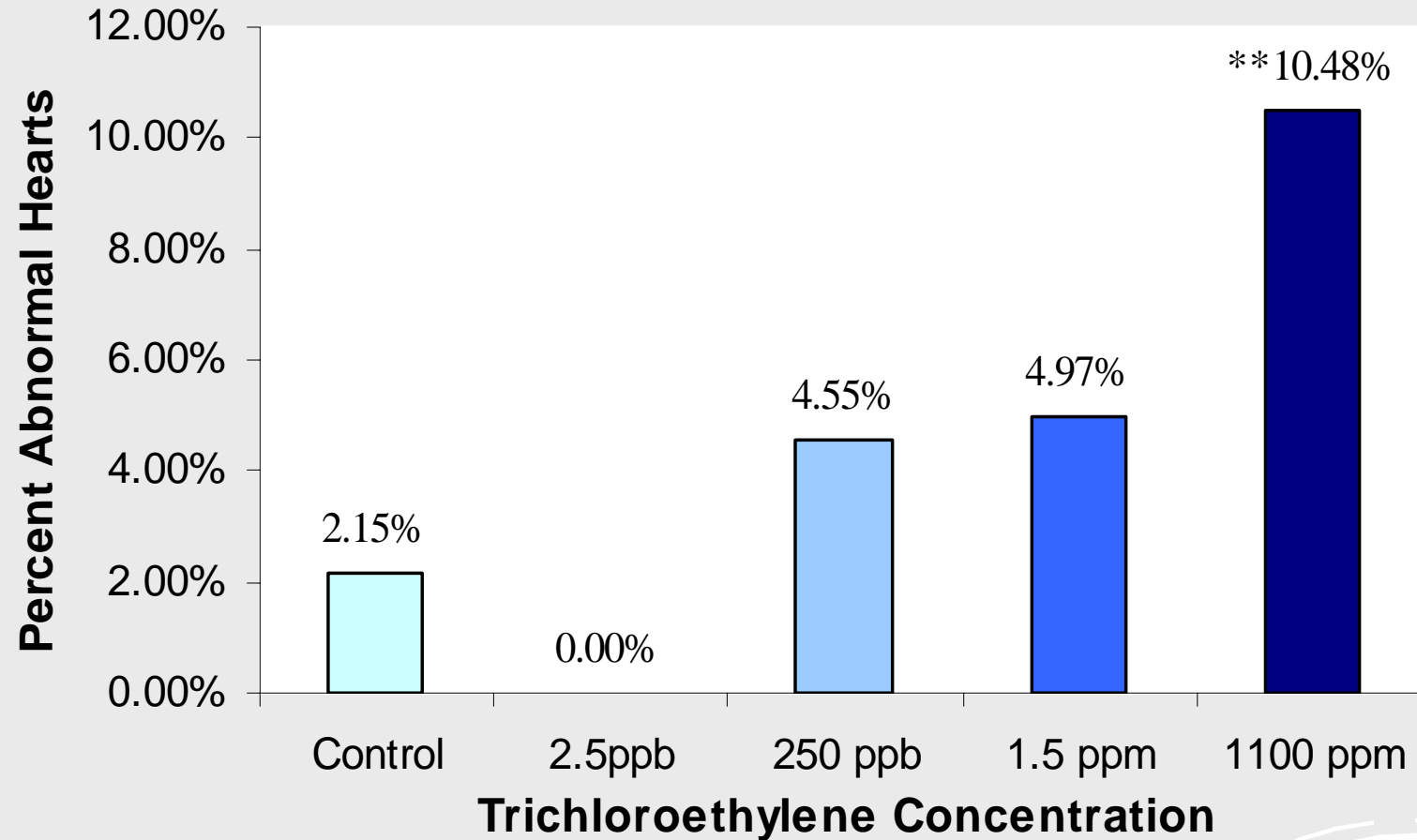
| Dk Water Conc | No. of Maternal Rats | Total No. of Fetuses |
|------------------|-------------------------|-------------------------|
| 1100 ppm | 9 | 105 |
| 1.5 ppm | 13 | 181 |
| 250 ppb | 9 | 110 |
| 2.5 ppb | 12 | 144 |
| Control | 55 | 606 |

Types of Heart Malformations

- Abnormal Looping
- Coronary Artery/Sinus
- Aortic Hypoplasia
- Pulmonary Artery Hypoplasia
- **Atrial Septal Defect (ASD)**
- Mitral Valve Defect
- Tricuspid Valve Defect
- **Ventricular Septal Defect (VSD):**
 - -peri-membranous (subAortic)
 - -muscular
- Atrio-Ventricular Septal Defect
- Pulmonary Valve Defect
- Aortic Valve Defect

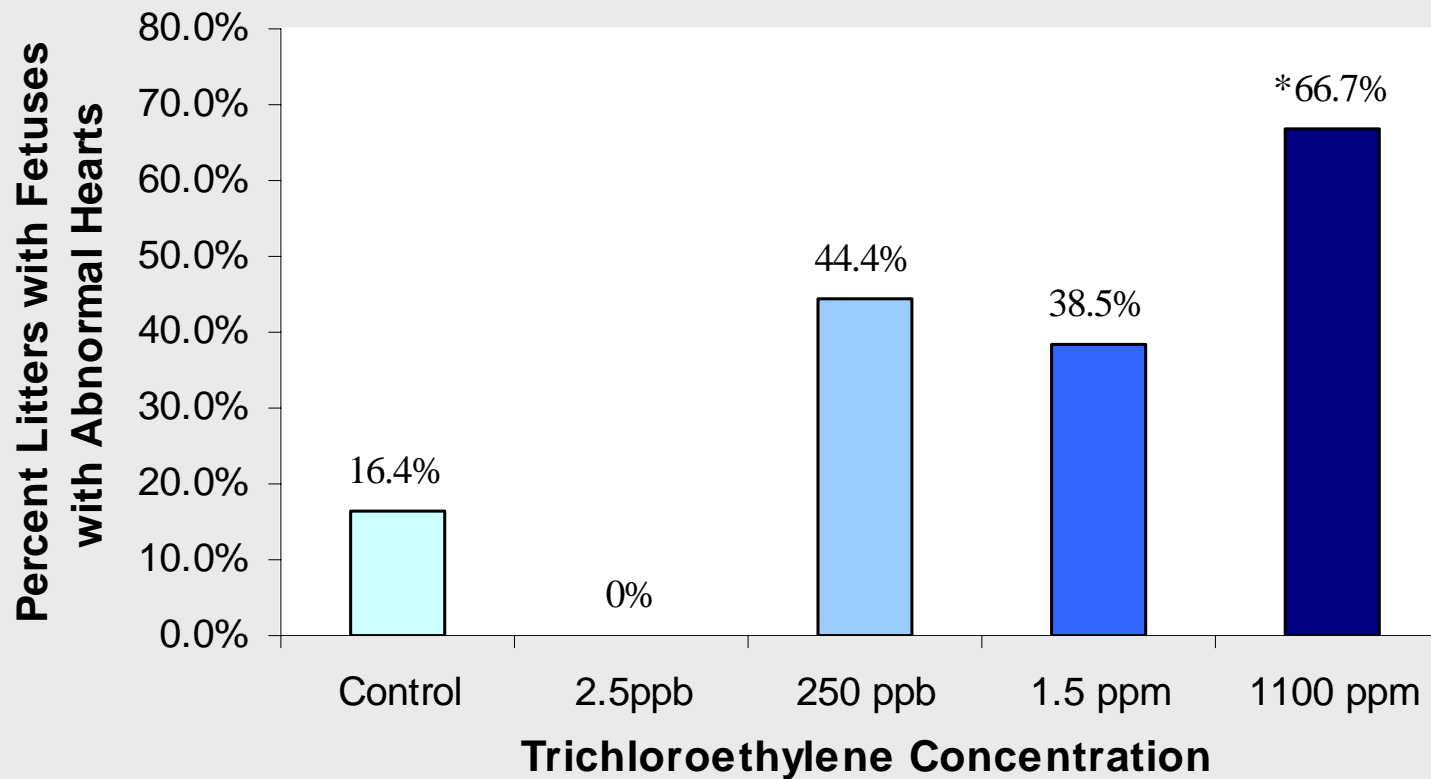


% Abnormal Hearts



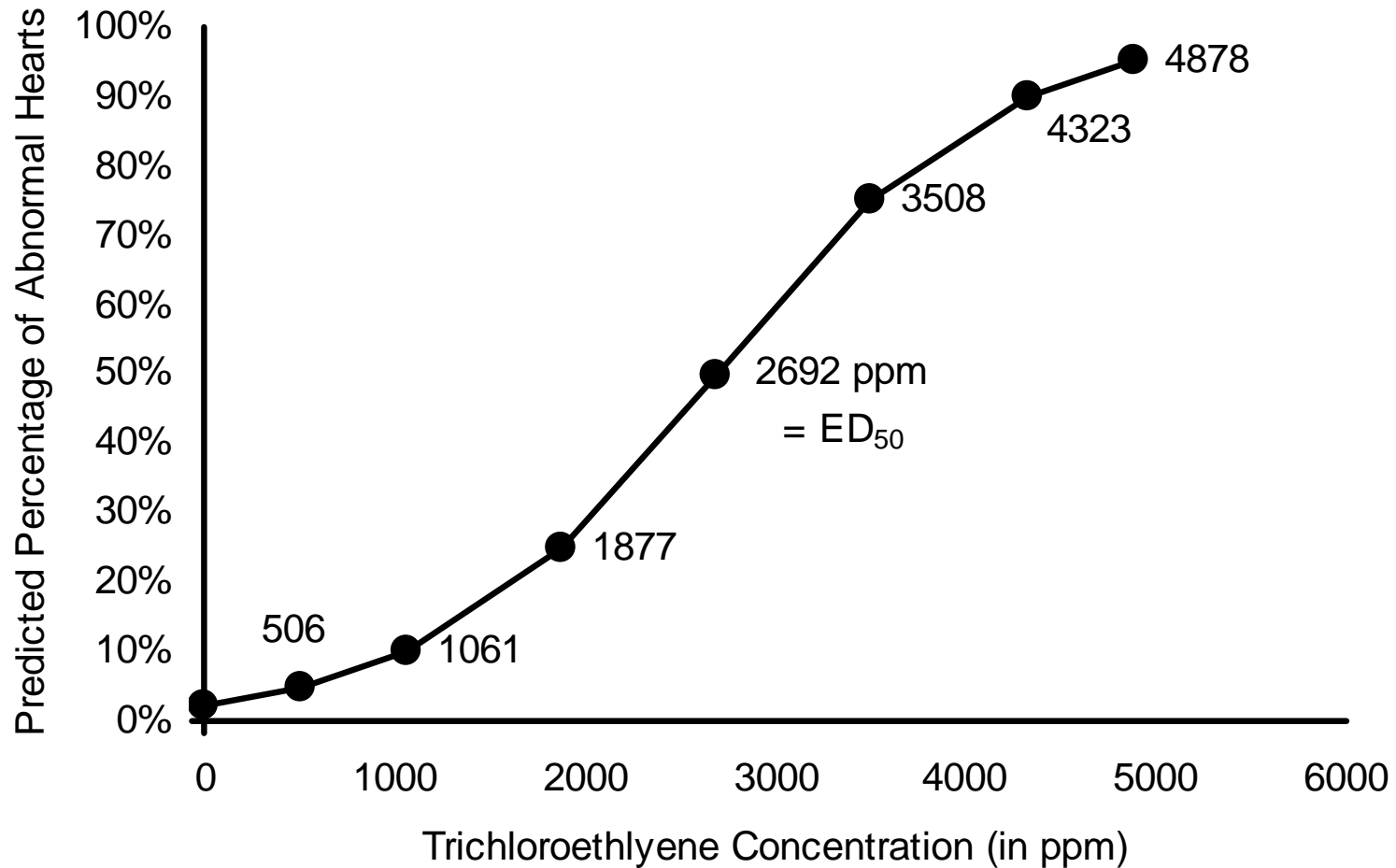
**Statistical Significance between control and treated groups

% Litters with Abnormal Hearts



*Statistical Significance between control and treated groups

Expected Effective Dose



Result Differences

Fisher, et al

- 4.5% Fetuses w/ heart malformations
- 60 % Litters w/ malformations
- Water Controls: 2.9% fetuses w/ heart malformations
- Soybean Oil Control: 6.5 % fetuses w/ heart malformations

Dawson, et al

- 10.4% Fetuses w/ heart malformations
- 67 % Litters w/ malformations
- Water Controls: 2.2% fetuses w/ heart malformations



Differences Due to ???

- Method of delivery
- Timing of delivery

➤ Fisher, et al.


- Daily Gavage in Soybean oil
- Gestation Day 6-15

➤ Dawson, et al.

- Continuously in Drinking Water
- Gestation Day 0 to 22



TCE Effects on Gene Expression

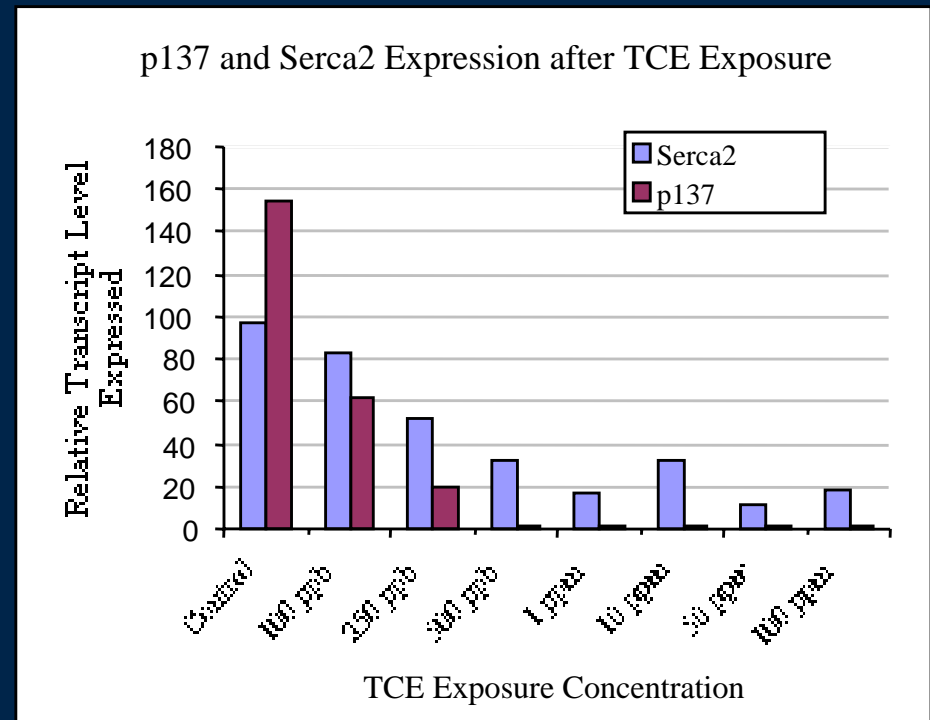
- Treatment of Pregnant Dams from the onset of pregnancy
 - Embryonic heart tissue collected Day 10-11 (E-11)
 - Several major cardiac developmental processes are underway
 - Heart tissue:
 - RNA isolation
 - Subtractive Hybridization
 - Screening Assays
- 

Gene Expression Results

- 160 Clones analyzed
- Grouped by Functional Considerations:
 - Housekeeping
 - Stress Response
 - **Potential Developmental Processes**
 - 9 cDNA specifically ID'd for heart
 - Shown to be sensitive to TCE exposure

Gene Expression after TCE Exposure

- Rat Serca-2 CA²⁺ - ATPase
- Rat GPI-p137
- Expression of both were Decreased as the levels of exposure to TCE increased



Conclusions

TCE exposure in rats →

- Increased cardiac malformations
 - Drinking Water Exposure during pregnancy
- Dose Response to TCE exposure
- Down Regulation of Serca2a and p137 genes
- Goals: Continued Gene sequence evaluation
 - Where altered levels of expression are producing cardiac malformations

- Eggers J, Channel S, Graeter L, Johnson P, MacMahon K, Sudberry G, Warren A, Latendresse J. Use of Hematoxylin Stain to Enhance Evaluation of Heart Malformations in the Fetal Rat. *Teratology*. 1999;59:173-175.
- Fisher JW, Channel SR, Eggers JS, Johnson PD, MacMahon K, Goodyear CD, Sudberry GL, Warren DA, Latendresse JR, Graeter LJ. Trichloroethylene, Trichloroacetic Acid, and Dichloroacetic Acid: Do They Affect Fetal Rat Heart Development? *International Toxicological Sciences*. 2001;20:257-267.
- Johnson PD, Goldberg SJ, Dawson BV. Threshold of TCE Contamination in Maternal Drinking Water Affecting Fetal Heart Development in the Rat. *Environ Health Perspectives*. 2003;111(3):289-292.
- Collier JM, Cover C, Selmin O, Johnson PD, Runyan R. Trichloroethylene Effects on Gene Expression During Cardiac Development. Accepted with revisions, *Toxicological Sciences*. 2002

Acknowledgements

Dr. Brenda V. Dawson, UA, U Auckland, NZ, Ret.

Dr. Ornella Selmin, UA Veterinary Science

Dr. Stanley J. Goldberg, UA Pediatric Cardiology, Ret.

Dr. Mike Collier, UA Cell Biology & Anatomy

Dr. Mary Mays, UA Biostatistician

Research Technicians:

Lisa Wright,

Belen Sarkhosh,

Patricia Thorne

Francoise Blachere

** NIEHS Superfund Basic Research Program Grant