

Appendix E

SEM and EDS Data by Subject

9/6/07

This document is a draft for review purposes only and does not constitute Agency policy.

E-2

DRAFT—DO NOT CITE OR QUOTE

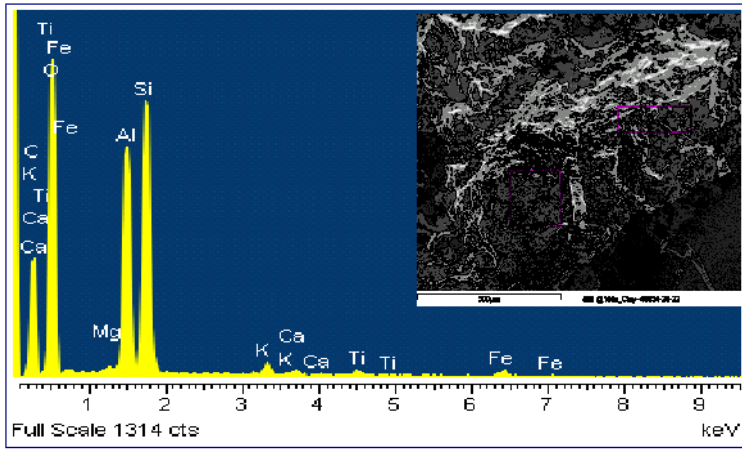


Figure E-1a. Sample of clay used by Subject 1.

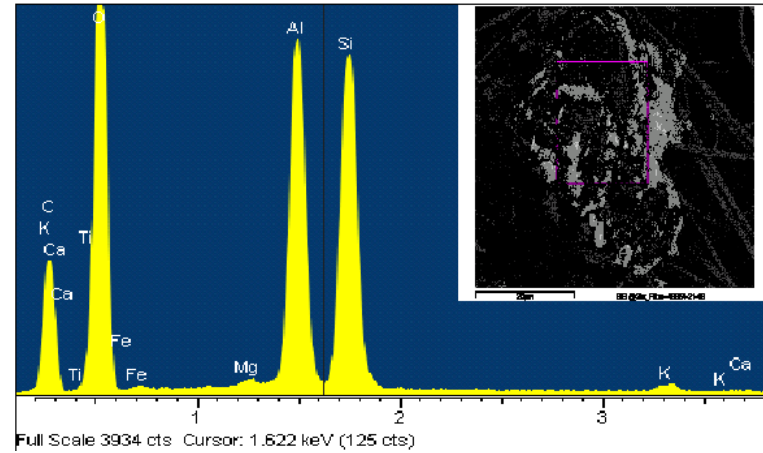


Figure E-1b. Clay particles on Subject 1's Respicon Filter.

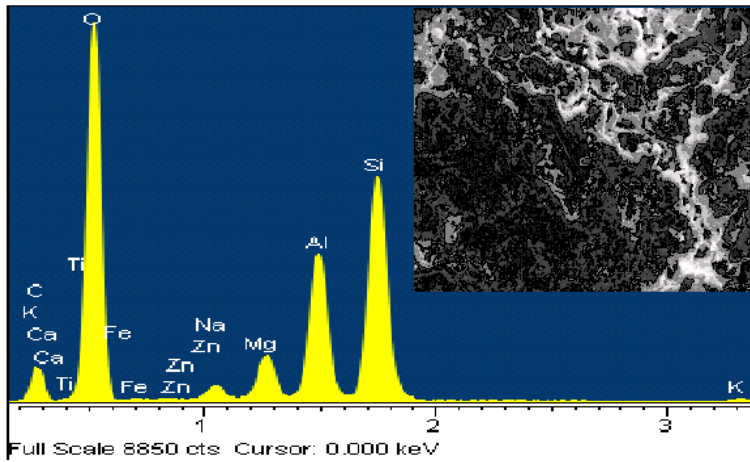


Figure E-2a. Sample of clay used by Subject 2.

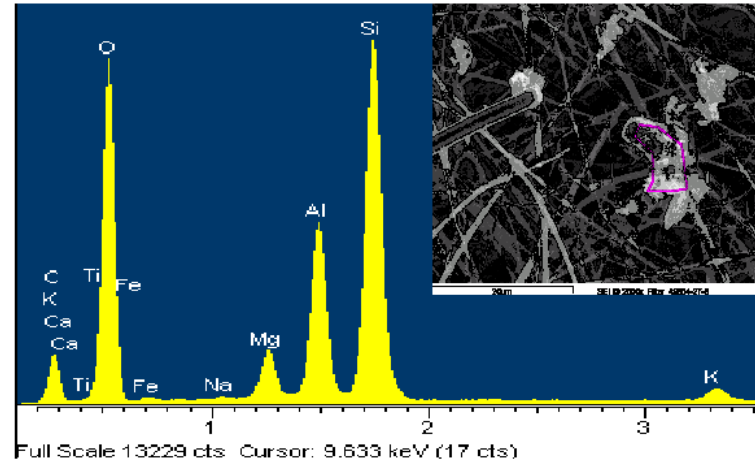


Figure E-2b. Clay particles on Subject 2's Respicon Filter.

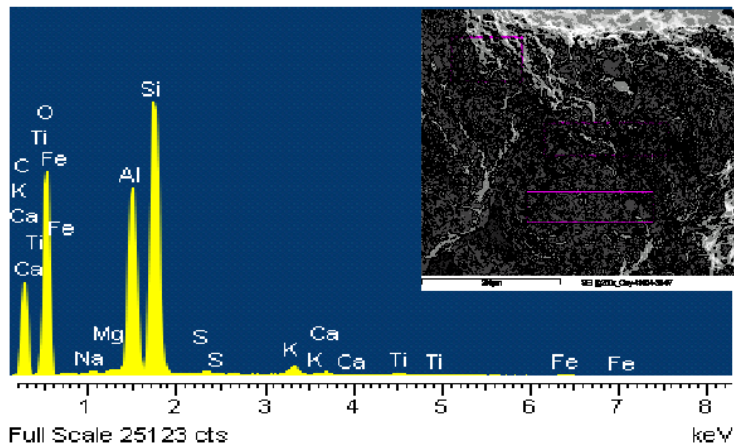


Figure E-3a. Sample of clay used by Subject 3.

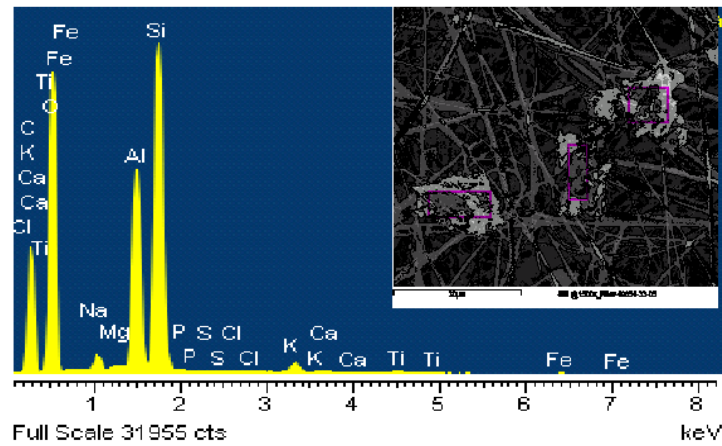


Figure E-3b. Clay particles on Subject 3's Respicon Filter.

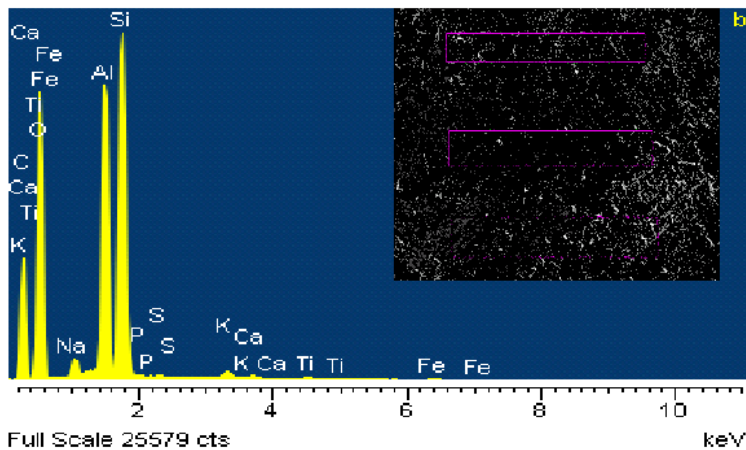


Figure E-4a. Sample of clay used by Subject 4.

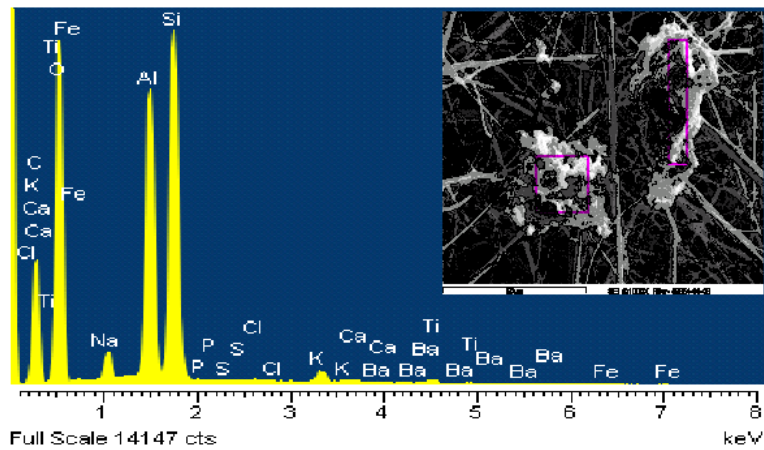


Figure E-4b. Clay particles on Subject 4's Respicon Filter.

9/6/07

This document is a draft for review purposes only and does not constitute Agency policy.

E-4

DRAFT—DO NOT CITE OR QUOTE

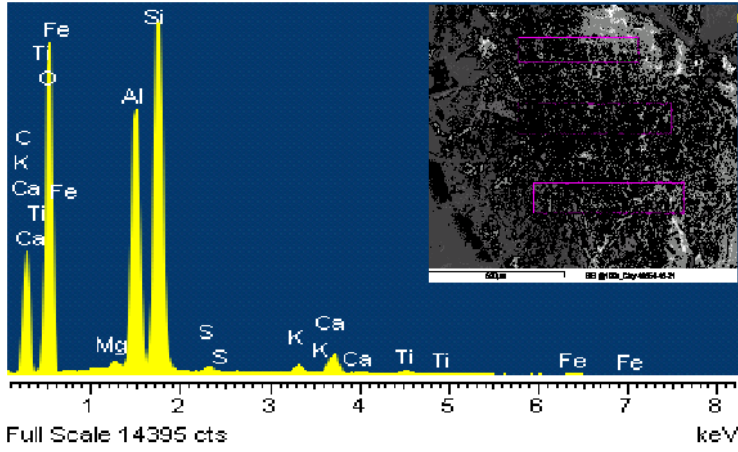


Figure E-5a. Sample of clay used by Subject 5.

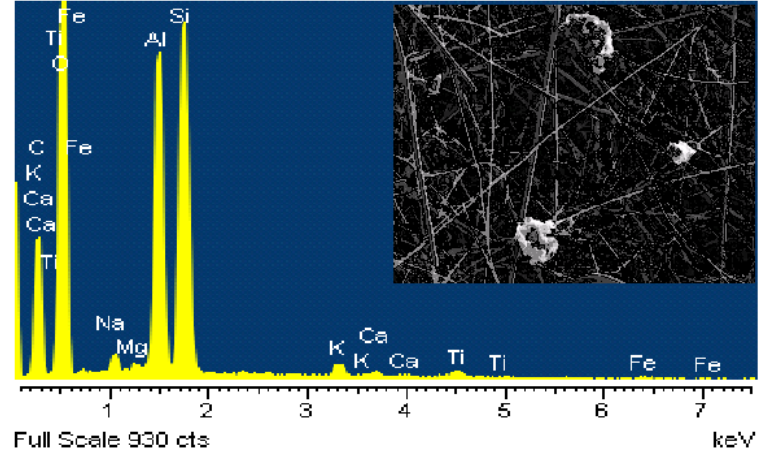


Figure E-5b. Clay particles on Subject 5's Respicon Filter.

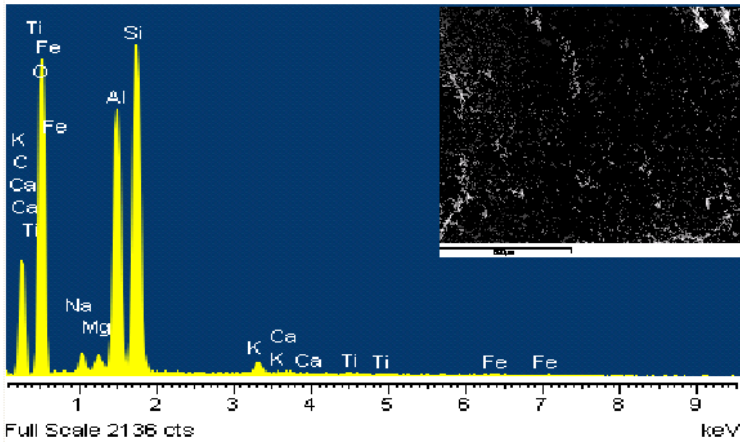


Figure E-6a. Sample of clay used by Subject 6.

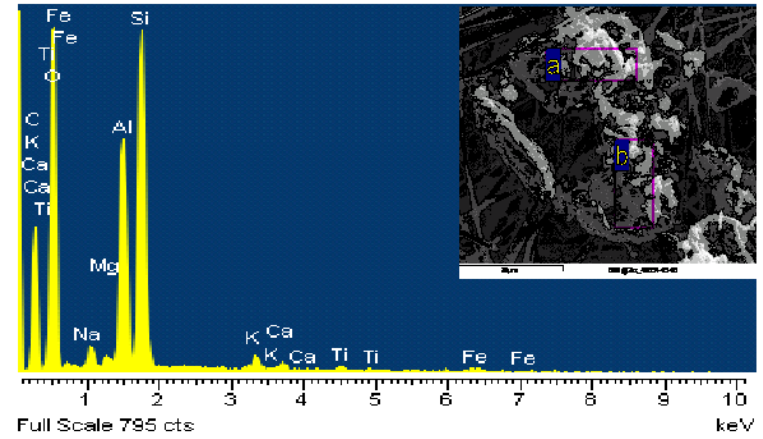


Figure E-6b. Clay particles on Subject 6's Respicon Filter.

9/6/07

This document is a draft for review purposes only and does not constitute Agency policy.

E-5

DRAFT—DO NOT CITE OR QUOTE

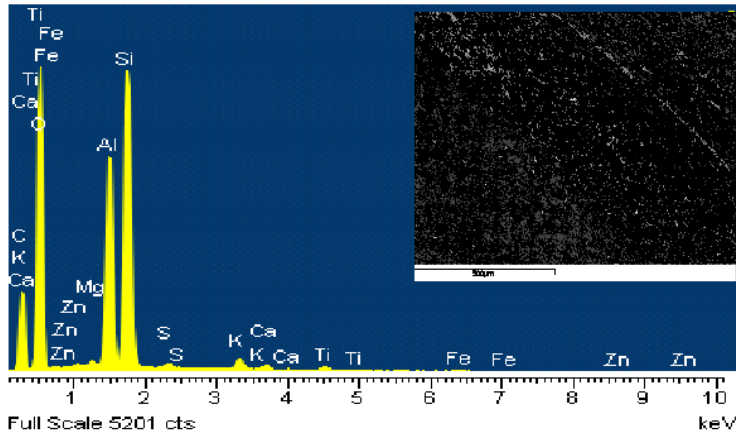


Figure E-7a. Sample of clay used by Subject 7.

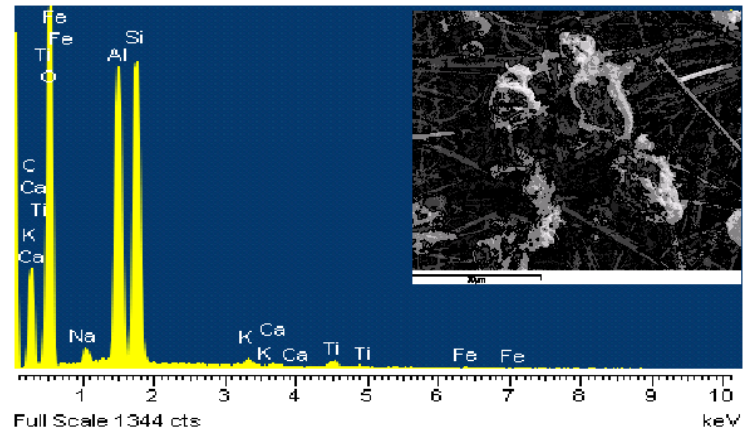


Figure E-7b. Clay particles on Subject 7's Respicon Filter.

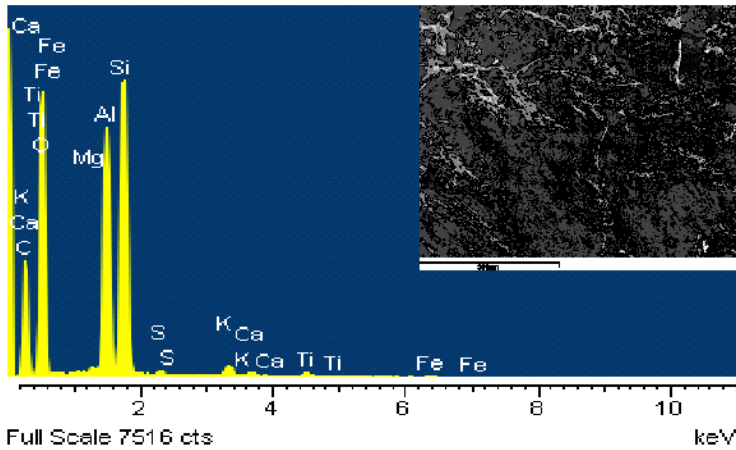


Figure E-8a. Sample of clay used by Subject 8.

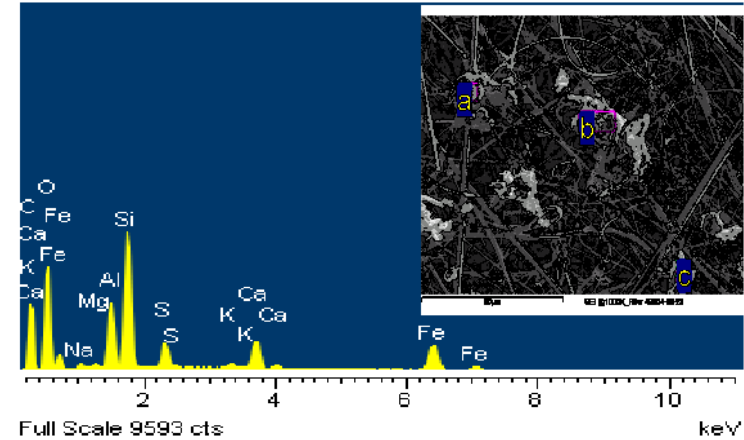


Figure E-8b. Clay particles on Subject 8's Respicon Filter.